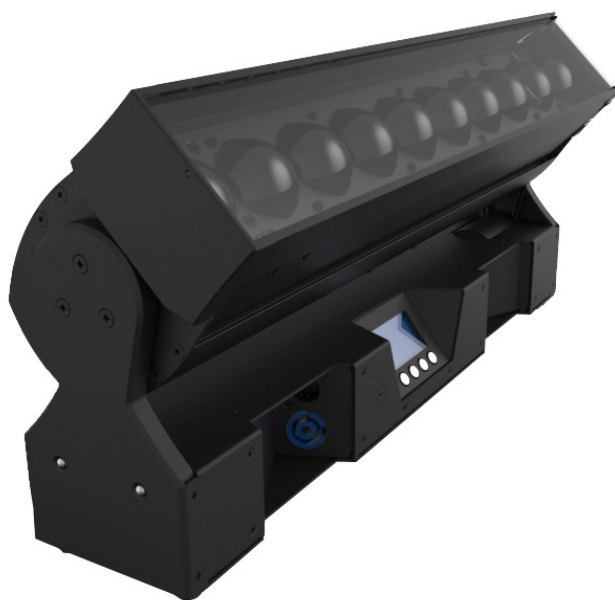


DMX Channel Index

impression[®]
X4 BAR



X4 Bar 10 CW/WW

Software Version 1.28



GLP® X4 Bar 10 CW/WW DMX Channel Index – Revision 20220203-02

This document covers fixture software version 1.28

© 2018-2022 German Light Products GmbH. All rights reserved.

The marks 'GLP' and 'German Light Products' are trademarks registered as the property of German Light Products GmbH in Germany, in the United States of America and in other countries.

The information contained in this document is subject to change without notice. German Light Products GmbH and all affiliated companies disclaim liability for any injury, damage, direct or indirect loss, consequential or economic loss or any other loss occasioned by the use of, inability to use or reliance on the information contained in this document.

Head office:

German Light Products GmbH (GLP), Industriestrasse 2, 76307 Karlsbad, Germany
Tel (Germany): +49 7248 92719 - 0

Service & Support EMEA:

GLP, Industriestrasse 2, 76307 Karlsbad, Germany
Tel. (Germany): +49 7248 9271955
Email: support@glp.de
www.glp.de

Service & Support USA:

GLP USA, 1145 Arroyo St., Ste. A, 91340 San Fernando, California
Tel (USA): +1 818 767 8899
Support (US): info@germanlightproducts.com
www.germanlightproducts.com

Introduction

The impression X4 Bar 10 CW/WW from GLP® can be operated in five different DMX modes that divide the fixture into different numbers of pixels.

The first seven DMX channels, including the Special / Control channel 4, are identical in all DMX modes. They give 16-bit control of Tilt, 16-bit dimming of the entire fixture, 8-bit Zoom, a Special / Control channel that gives access to fixture setup options via DMX and an 8-bit Shutter channel for strobe / instant blackout effects. As well as these, the different DMX modes also give the following options:

Mode 1 – 10-Pixel Mode (27 channels)

Individual cool white and warm white intensity control of 20 cells as 20 pixels. This mode allows full pixel mapping of each LED cell and has the largest DMX channel footprint.

Mode 2 – 5-Pixel Mode (17 channels)

Individual cool white and warm white intensity control of 5 pairs of cells as 5 pixels.

Mode 3 – 2-Pixel Mode (11 channels)

Individual cool white and warm white intensity control of 2 groups of 5 cells as 2 pixels.

Mode 4 – Single-pixel Mode (9 channels)

Individual cool white and warm white intensity control of entire fixture as one pixel. This mode has the smallest DMX channel footprint.

Notes

To apply a command on the Special / Control channel, you must start from DMX value zero and then send the DMX value continuously for 3 seconds (unless a different duration is specified for that command in the following tables).

DMX Mode 1 – 10pix (27 DMX channels)**16-bit tilt, zoom, 16-bit dimming, 1 cell per pixel, 10 pixels**

Channel	Command	DMX range	Percent	Default DMX	Fade	
1	Tilt coarse (MSB)	0-210°	0-255	0-100%	127	Fade
2	Tilt fine (LSB)	Coarse tilt + 0-1.2°	0-255	0-100%	127	Fade
3	Zoom	Wide (flood) - narrow (spot)	0-255	0-100%	0	Fade
4	Special / Control	No function	0-59	0-23.1%		
		Capture DMX scene	60-63	23.5-24.7%		
		DMX hold use captured scene	64-67	25.1-26.3%		
		No function	68-71	26.7-27.8%		
		Base fan full off	72-75	28.2-29.4%		
		Base fan full on	76-79	29.8-31.0%		
		Head fan full off	80-83	31.4-32.5%		
		Head fan full on	84-87	32.9-34.1%		
		PWM frequency 600 Hz	88-91	34.5-35.7%		
		PWM frequency 1200 Hz	92-95	36.1-37.3%		
		PWM frequency 2400 Hz	96-99	37.6-38.8%		
		PWM frequency 4800 Hz	100-103	39.2-40.4%		
		PWM frequency 9600 Hz	104-107	40.8-42.0%		
		PWM frequency 19.2 kHz	108-111	42.4-43.5%		
		PWM frequency 25 kHz	112-115	43.9-45.1%		
		No function	116-143	45.5-56.1%		
		Display Flip off	144-147	56.5-57.6%		
		Display Flip on	148-151	58.0-59.2%		
		No function	152-191	59.6-74.9%		
		X4 compatibility off	192-195	75.3-76.5%		
		X4 compatibility on	196-199	76.9-78.0%		
		Silent Mode off	200-203	78.4-79.6%		
		Silent Mode on	204-207	80.0-81.2%		
		Position Feedback off	208-211	81.6-82.7%		
		Position Feedback on	212-215	83.1-84.3%		
		DMX hold off	216-219	84.7-85.9%		
		DMX hold on	220-223	86.3-87.5%		
		Tilt inverse off	224-227	87.8-89.0%		
		Tilt inverse on	228-231	89.4-90.6%		
		Pixel inverse off	232-235	91.0-92.2%		
Pixel inverse on	236-239	92.5-93.7%				
Zoom inverse off	240-243	94.1-95.3%				
Zoom inverse on	244-247	95.7-96.9%				
Fixture default	248-251	97.3-98.4%				
Fixture reset	252-255	98.8-100%				
5	Dimmer coarse	Intensity 0-100%	0-65535	0-100%	255	Fade
6	Dimmer fine					

7	Shutter	Closed, zero light output	0-15	0-5.9%	255	Snap
		Random pulse slow-fast	16-47	6.3-18.4%		Fade
		Opening pulse slow-fast	48-79	18.8-31.0%		
		Closing pulse slow-fast	80-111	31.4-43.5%		
		Pulse slow-fast	112-143	43.9-56.1%		
		Random strobe slow-fast	144-159	56.5-62.4%		
		Pause strobe slow-fast	160-199	62.7-78.0%		
		Strobe slow-fast	200-239	78.4-93.7%		
Open, max. light output	240-255	94.1-100%	Snap			
8	Pixel 1 CW	Cool white intensity 0-100%	0-255	0-100%	0	Fade
9	Pixel 1 WW	Warm white intensity 0-100%	0-255	0-100%	0	Fade
10	Pixel 2 CW	Cool white intensity 0-100%	0-255	0-100%	0	Fade
11	Pixel 2 WW	Warm white intensity 0-100%	0-255	0-100%	0	Fade
12	Pixel 3 CW	Cool white intensity 0-100%	0-255	0-100%	0	Fade
13	Pixel 3 WW	Warm white intensity 0-100%	0-255	0-100%	0	Fade
14	Pixel 4 CW	Cool white intensity 0-100%	0-255	0-100%	0	Fade
15	Pixel 4 WW	Warm white intensity 0-100%	0-255	0-100%	0	Fade
16	Pixel 5 CW	Cool white intensity 0-100%	0-255	0-100%	0	Fade
17	Pixel 5 WW	Warm white intensity 0-100%	0-255	0-100%	0	Fade
18	Pixel 6 CW	Cool white intensity 0-100%	0-255	0-100%	0	Fade
19	Pixel 6 WW	Warm white intensity 0-100%	0-255	0-100%	0	Fade
20	Pixel 7 CW	Cool white intensity 0-100%	0-255	0-100%	0	Fade
21	Pixel 7 WW	Warm white intensity 0-100%	0-255	0-100%	0	Fade
22	Pixel 8 CW	Cool white intensity 0-100%	0-255	0-100%	0	Fade
23	Pixel 8 WW	Warm white intensity 0-100%	0-255	0-100%	0	Fade
24	Pixel 9 CW	Cool white intensity 0-100%	0-255	0-100%	0	Fade
25	Pixel 9 WW	Warm white intensity 0-100%	0-255	0-100%	0	Fade
26	Pixel 10 CW	Cool white intensity 0-100%	0-255	0-100%	0	Fade
27	Pixel 10 WW	Warm white intensity 0-100%	0-255	0-100%	0	Fade

DMX Mode 2 – 5pix (17 DMX channels)

16-bit tilt, zoom, 16-bit dimming, two-cell control, 5 pixels

Channel	Command	DMX range	Percent	Default DMX	Fade	
1	Tilt coarse (MSB)	0-210°	0-255	0-100%	127	Fade
2	Tilt fine (LSB)	Coarse tilt + 0-1.2°	0-255	0-100%	127	Fade
3	Zoom	Wide (flood) - narrow (spot)	0-255	0-100%	0	Fade
4	Special / Control	No function	0-59	0-23.1%		
		Capture DMX scene	60-63	23.5-24.7%		
		DMX hold use captured scene	64-67	25.1-26.3%		
		No function	68-71	26.7-27.8%		
		Base fan full off	72-75	28.2-29.4%		
		Base fan full on	76-79	29.8-31.0%		
		Head fan full off	80-83	31.4-32.5%		
		Head fan full on	84-87	32.9-34.1%		
		PWM frequency 600 Hz	88-91	34.5-35.7%		
		PWM frequency 1200 Hz	92-95	36.1-37.3%		
		PWM frequency 2400 Hz	96-99	37.6-38.8%		
		PWM frequency 4800 Hz	100-103	39.2-40.4%		
		PWM frequency 9600 Hz	104-107	40.8-42.0%		
		PWM frequency 19.2 kHz	108-111	42.4-43.5%		
		PWM frequency 25 kHz	112-115	43.9-45.1%		
		No function	116-143	45.5-56.1%		
		Display Flip off	144-147	56.5-57.6%		
		Display Flip on	148-151	58.0-59.2%		
		No function	152-191	59.6-74.9%		
		X4 compatibility off	192-195	75.3-76.5%		
		X4 compatibility on	196-199	76.9-78.0%		
		Silent Mode off	200-203	78.4-79.6%		
		Silent Mode on	204-207	80.0-81.2%		
		Position Feedback off	208-211	81.6-82.7%		
		Position Feedback on	212-215	83.1-84.3%		
		DMX hold off	216-219	84.7-85.9%		
		DMX hold on	220-223	86.3-87.5%		
		Tilt inverse off	224-227	87.8-89.0%		
		Tilt inverse on	228-231	89.4-90.6%		
		Pixel inverse off	232-235	91.0-92.2%		
Pixel inverse on	236-239	92.5-93.7%				
Zoom inverse off	240-243	94.1-95.3%				
Zoom inverse on	244-247	95.7-96.9%				
Fixture default	248-251	97.3-98.4%				
Fixture reset	252-255	98.8-100%				
5	Dimmer coarse	Intensity 0-100%	0-65535	0-100%	255	Fade
6	Dimmer fine					

7	Shutter	Closed, zero light output	0-15	0-5.9%	255	Snap
		Random pulse slow-fast	16-47	6.3-18.4%		Fade
		Opening pulse slow-fast	48-79	18.8-31.0%		
		Closing pulse slow-fast	80-111	31.4-43.5%		
		Pulse slow-fast	112-143	43.9-56.1%		
		Random strobe slow-fast	144-159	56.5-62.4%		
		Pause strobe slow-fast	160-199	62.7-78.0%		
		Strobe slow-fast	200-239	78.4-93.7%		
Open, max. light output	240-255	94.1-100%	Snap			
8	Pixel 1 CW	Cool white intensity 0-100%	0-255	0-100%	0	Fade
9	Pixel 1 WW	Warm white intensity 0-100%	0-255	0-100%	0	Fade
10	Pixel 2 CW	Cool white intensity 0-100%	0-255	0-100%	0	Fade
11	Pixel 2 WW	Warm white intensity 0-100%	0-255	0-100%	0	Fade
12	Pixel 3 CW	Cool white intensity 0-100%	0-255	0-100%	0	Fade
13	Pixel 3 WW	Warm white intensity 0-100%	0-255	0-100%	0	Fade
14	Pixel 4 CW	Cool white intensity 0-100%	0-255	0-100%	0	Fade
15	Pixel 4 WW	Warm white intensity 0-100%	0-255	0-100%	0	Fade
16	Pixel 5 CW	Cool white intensity 0-100%	0-255	0-100%	0	Fade
17	Pixel 5 WW	Warm white intensity 0-100%	0-255	0-100%	0	Fade

DMX Mode 3 – 2pix (11 DMX channels)

16-bit tilt, zoom, 16-bit dimming, 5-cell control, 2 pixels

Channel	Command	DMX range	Percent	Default DMX	Fade	
1	Tilt coarse (MSB)	0-210°	0-255	0-100%	127	Fade
2	Tilt fine (LSB)	Coarse tilt + 0-1.2°	0-255	0-100%	127	Fade
3	Zoom	Wide (flood) - narrow (spot)	0-255	0-100%	0	Fade
4	Special / Control	No function	0-59	0-23.1%		
		Capture DMX scene	60-63	23.5-24.7%		
		DMX hold use captured scene	64-67	25.1-26.3%		
		No function	68-71	26.7-27.8%		
		Base fan full off	72-75	28.2-29.4%		
		Base fan full on	76-79	29.8-31.0%		
		Head fan full off	80-83	31.4-32.5%		
		Head fan full on	84-87	32.9-34.1%		
		PWM frequency 600 Hz	88-91	34.5-35.7%		
		PWM frequency 1200 Hz	92-95	36.1-37.3%		
		PWM frequency 2400 Hz	96-99	37.6-38.8%		
		PWM frequency 4800 Hz	100-103	39.2-40.4%		
		PWM frequency 9600 Hz	104-107	40.8-42.0%		
		PWM frequency 19.2 kHz	108-111	42.4-43.5%		
		PWM frequency 25 kHz	112-115	43.9-45.1%		
		No function	116-143	45.5-56.1%		
		Display Flip off	144-147	56.5-57.6%		
		Display Flip on	148-151	58.0-59.2%		
		No function	152-191	59.6-74.9%		
		X4 compatibility off	192-195	75.3-76.5%		
		X4 compatibility on	196-199	76.9-78.0%		
		Silent Mode off	200-203	78.4-79.6%		
		Silent Mode on	204-207	80.0-81.2%		
		Position Feedback off	208-211	81.6-82.7%		
		Position Feedback on	212-215	83.1-84.3%		
		DMX hold off	216-219	84.7-85.9%		
		DMX hold on	220-223	86.3-87.5%		
		Tilt inverse off	224-227	87.8-89.0%		
		Tilt inverse on	228-231	89.4-90.6%		
		Pixel inverse off	232-235	91.0-92.2%		
Pixel inverse on	236-239	92.5-93.7%				
Zoom inverse off	240-243	94.1-95.3%				
Zoom inverse on	244-247	95.7-96.9%				
Fixture default	248-251	97.3-98.4%				
Fixture reset	252-255	98.8-100%				
5	Dimmer coarse	Intensity 0-100%	0-65535	0-100%	255	Fade
6	Dimmer fine					

7	Shutter	Closed, zero light output	0-15	0-5.9%	255	Snap
		Random pulse slow-fast	16-47	6.3-18.4%		Fade
		Opening pulse slow-fast	48-79	18.8-31.0%		
		Closing pulse slow-fast	80-111	31.4-43.5%		
		Pulse slow-fast	112-143	43.9-56.1%		
		Random strobe slow-fast	144-159	56.5-62.4%		
		Pause strobe slow-fast	160-199	62.7-78.0%		
		Strobe slow-fast	200-239	78.4-93.7%		
Open, max. light output	240-255	94.1-100%	Snap			
8	Pixel 1 CW	Cool white intensity 0-100%	0-255	0-100%	0	Fade
9	Pixel 1 WW	Warm white intensity 0-100%	0-255	0-100%	0	Fade
10	Pixel 2 CW	Cool white intensity 0-100%	0-255	0-100%	0	Fade
11	Pixel 2 WW	Warm white intensity 0-100%	0-255	0-100%	0	Fade

DMX Mode 4 – 1pix (9 DMX channels)**16-bit tilt, zoom, 16-bit dimming, grouped control of all 10 cells as one pixel**

Channel	Command	DMX range	Percent	Default DMX	Fade	
1	Tilt coarse (MSB)	0-210°	0-255	0-100%	127	Fade
2	Tilt fine (LSB)	Coarse tilt + 0-1.2°	0-255	0-100%	127	Fade
3	Zoom	Wide (flood) - narrow (spot)	0-255	0-100%	0	Fade
4	Special / Control	No function	0-59	0-23.1%		
		Capture DMX scene	60-63	23.5-24.7%		
		DMX hold use captured scene	64-67	25.1-26.3%		
		No function	68-71	26.7-27.8%		
		Base fan full off	72-75	28.2-29.4%		
		Base fan full on	76-79	29.8-31.0%		
		Head fan full off	80-83	31.4-32.5%		
		Head fan full on	84-87	32.9-34.1%		
		PWM frequency 600 Hz	88-91	34.5-35.7%		
		PWM frequency 1200 Hz	92-95	36.1-37.3%		
		PWM frequency 2400 Hz	96-99	37.6-38.8%		
		PWM frequency 4800 Hz	100-103	39.2-40.4%		
		PWM frequency 9600 Hz	104-107	40.8-42.0%		
		PWM frequency 19.2 kHz	108-111	42.4-43.5%		
		PWM frequency 25 kHz	112-115	43.9-45.1%		
		No function	116-143	45.5-56.1%		
		Display Flip off	144-147	56.5-57.6%		
		Display Flip on	148-151	58.0-59.2%		
		No function	152-191	59.6-74.9%		
		X4 compatibility off	192-195	75.3-76.5%		
		X4 compatibility on	196-199	76.9-78.0%		
		Silent Mode off	200-203	78.4-79.6%		
		Silent Mode on	204-207	80.0-81.2%		
		Position Feedback off	208-211	81.6-82.7%		
		Position Feedback on	212-215	83.1-84.3%		
		DMX hold off	216-219	84.7-85.9%		
		DMX hold on	220-223	86.3-87.5%		
		Tilt inverse off	224-227	87.8-89.0%		
		Tilt inverse on	228-231	89.4-90.6%		
		Pixel inverse off	232-235	91.0-92.2%		
Pixel inverse on	236-239	92.5-93.7%				
Zoom inverse off	240-243	94.1-95.3%				
Zoom inverse on	244-247	95.7-96.9%				
Fixture default	248-251	97.3-98.4%				
Fixture reset	252-255	98.8-100%				
5	Dimmer coarse	Intensity 0-100%	0-65535	0-100%	255	Fade
6	Dimmer fine					

7	Shutter	Closed, zero light output	0-15	0-5.9%	255	Snap
		Random pulse slow-fast	16-47	6.3-18.4%		Fade
		Opening pulse slow-fast	48-79	18.8-31.0%		
		Closing pulse slow-fast	80-111	31.4-43.5%		
		Pulse slow-fast	112-143	43.9-56.1%		
		Random strobe slow-fast	144-159	56.5-62.4%		
		Pause strobe slow-fast	160-199	62.7-78.0%		
		Strobe slow-fast	200-239	78.4-93.7%		
Open, max. light output	240-255	94.1-100%	Snap			
8	All pixels CW	Cool white intensity 0-100%	0-255	0-100%	0	Fade
9	All pixels WW	Warm white intensity 0-100%	0-255	0-100%	0	Fade

