



S500
Photometric Report

Report 2024-03-04-1

GLP German Light Products GmbH
GLP LightLab

CRI	92
Lamp	S500Prototype
Measurement Date	2024-03-04 10:27
Analysis SW Version	2.8.6-2-g023e27d



Contents

1	White Quality – CRI	2
1.1	TM-30-15 Detail Plots	3
1.2	TLCI-2012 Results	5

1 White Quality – CRI

Table 1: Summary for CRI spectral measurement results and color metrics.

Metric	Value
CCT	6135 K
CCT D_{uv}	0.0023
CRI R_a	92
CRI R_g	57
TLCI-2012	92
TM-30-15 R_f	97
TM-30-15 R_g	88
CIE 1931 x	0.319
CIE 1931 y	0.334
CIE 1960 u	0.201
CIE 1960 v	0.314

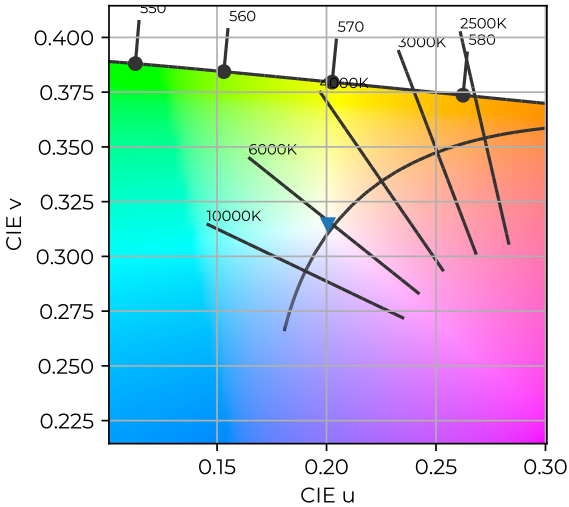


Figure 1: Color coordinates in CIE 1960 chromaticity diagram. CRI

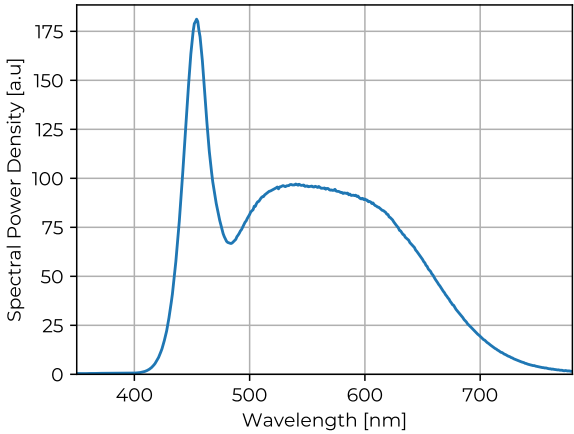
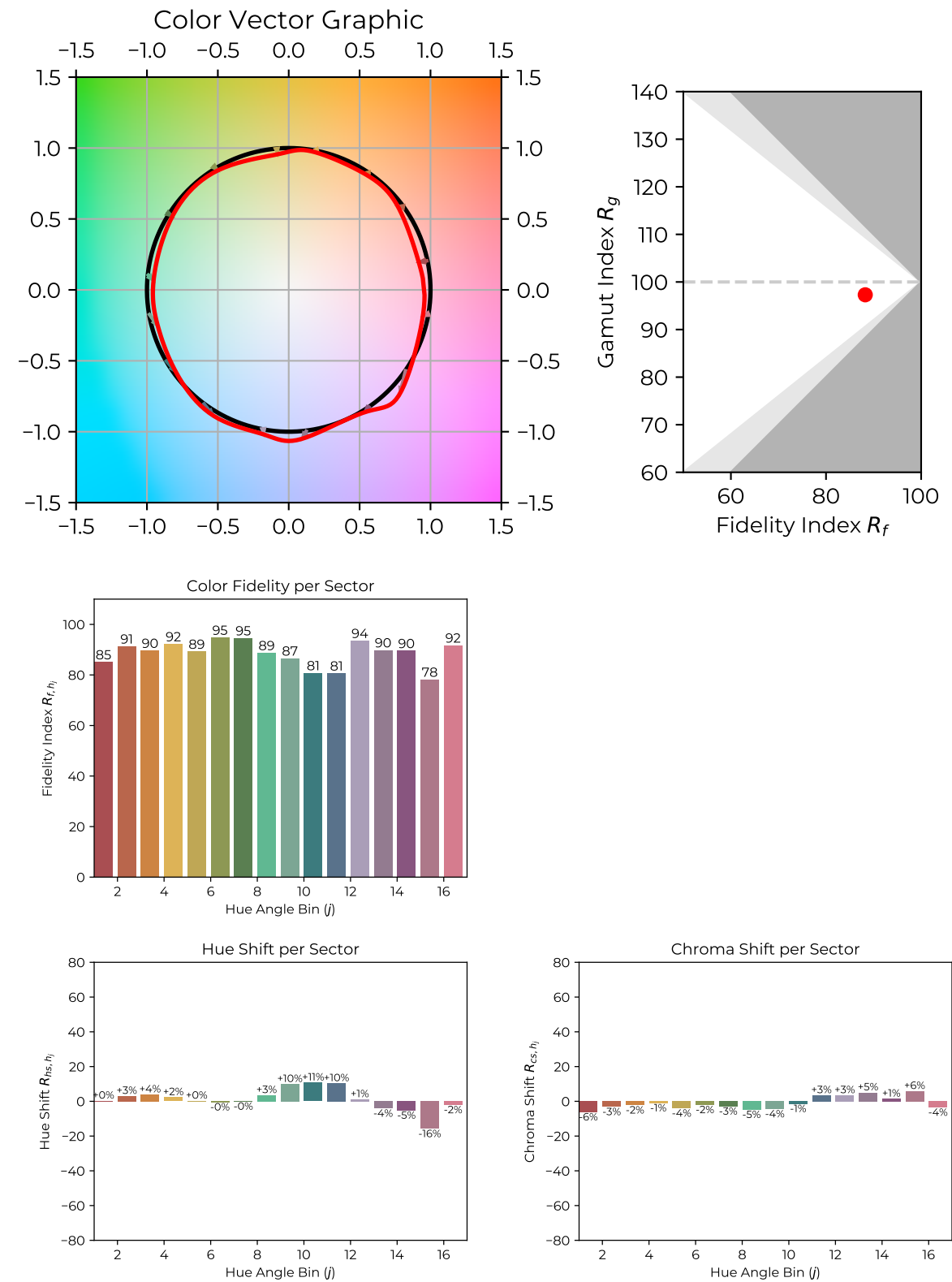
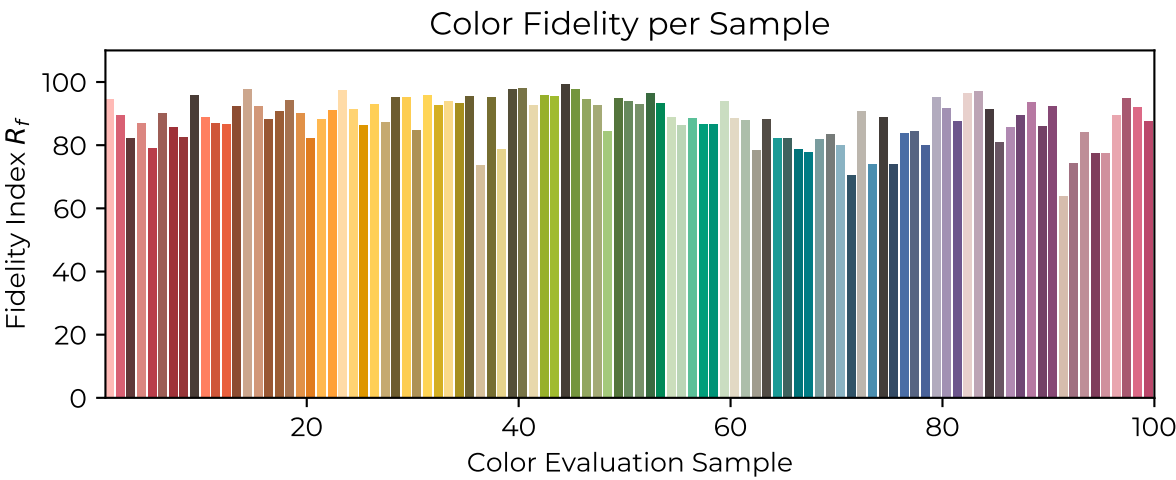


Figure 2: Measured Spectral Power Distribution of light source. CRI

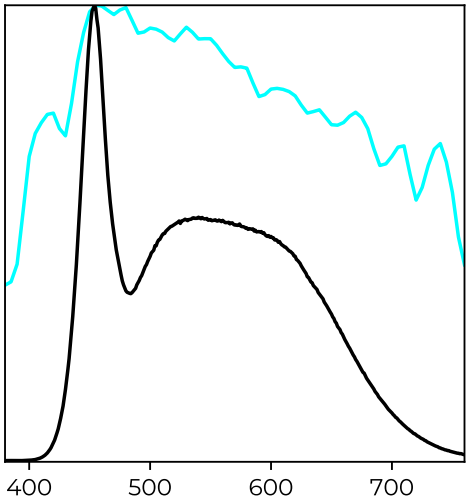
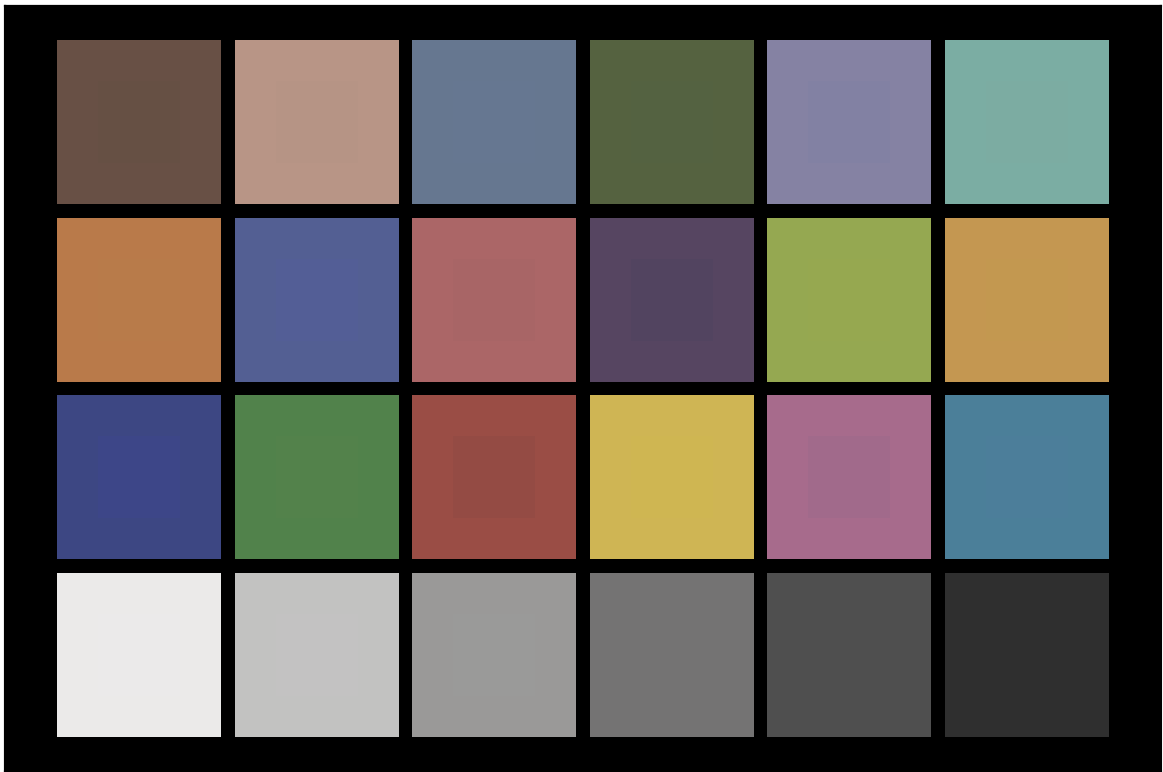
1.1 TM-30-15 Detail Plots





1.2 TLCI-2012 Results

S500 CRI : CCT = D6138 - 0.18, TLCI = 92



Sector	Lightness	Chroma	Hue
R	2	2	2
R/Y	1	1	1
Y	1	1	1
Y/G	0	0	0
G	1	1	1
G/C	0	0	0
C	0	0	0
C/B	2	2	2
B	1	1	1
B/M	2	2	2
M	2	2	2
M/R	3	3	3